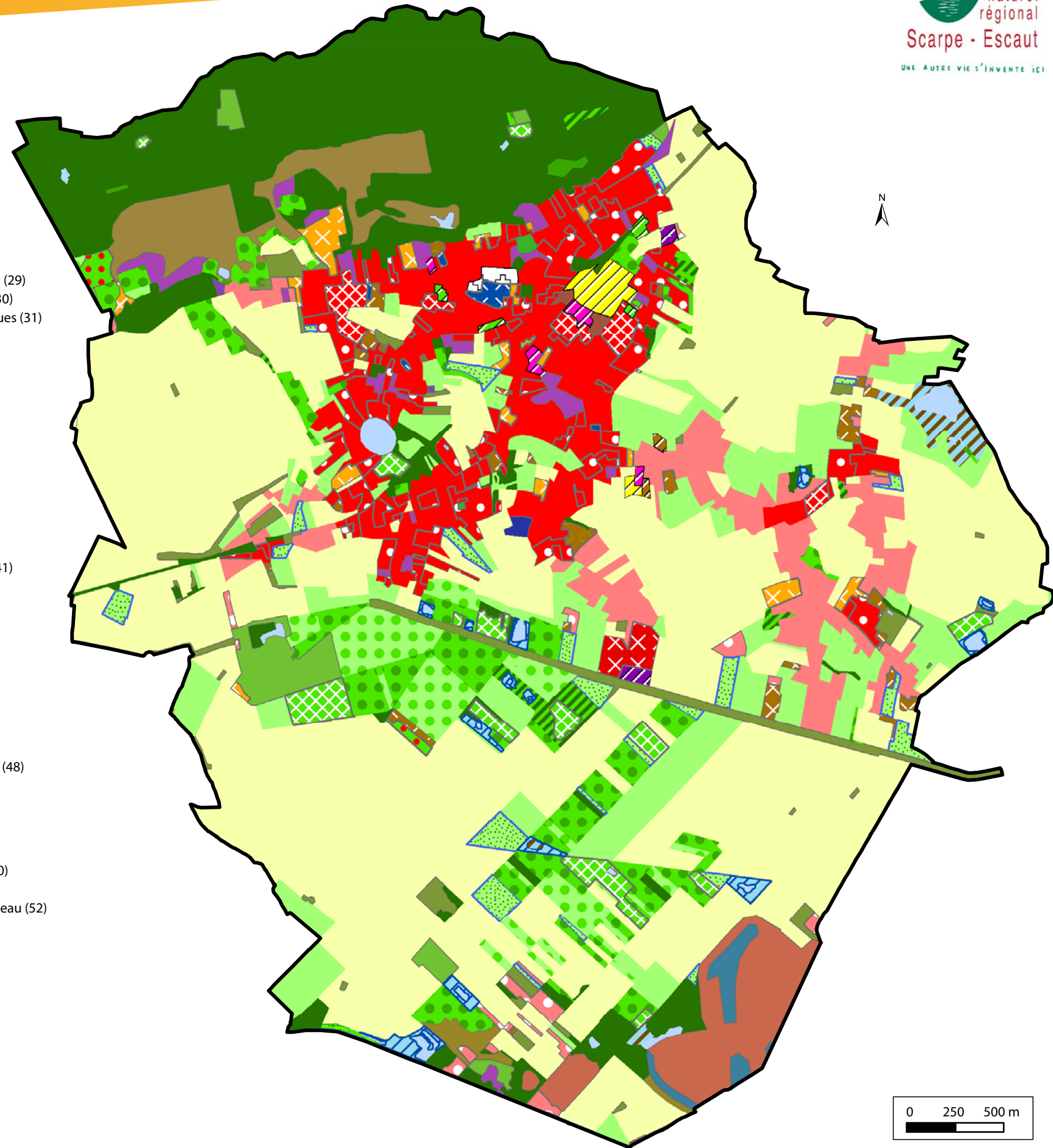


# Occupation du sol [niveau 3] en 2009 sur la commune de Flines-les-Râches

Occupation du sol en 2009  
[Niveau 3 - 53 classes]

- |                                     |   |                             |  |                |   |
|-------------------------------------|---|-----------------------------|--|----------------|---|
| Urbain dense ou central             | <ul style="list-style-type: none"> <li><span style="display: inline-block; width: 15px; height: 10px; background-color: #800000; border: 1px solid black;"></span> Urbain dense (1)</li> <li><span style="display: inline-block; width: 15px; height: 10px; background-color: #FF0000; border: 1px solid black;"></span> Centre bourg (2)</li> </ul>  | Espaces urbains en mutation | <ul style="list-style-type: none"> <li><span style="display: inline-block; width: 15px; height: 10px; background-color: #4682B4; border: 1px solid black;"></span> Terrils peu ou pas végétalisés (29)</li> <li><span style="display: inline-block; width: 15px; height: 10px; background-color: #8B4513; border: 1px solid black;"></span> Espaces associés aux terrils (30)</li> <li><span style="display: inline-block; width: 15px; height: 10px; background-color: #00008B; border: 1px solid black;"></span> Friches d'activités économiques (31)</li> <li><span style="display: inline-block; width: 15px; height: 10px; background-color: #800080; border: 1px solid black;"></span> Autres délaissés urbains ou d'infrastructures (32)</li> </ul>   |                |   |
| Habitat                             | <ul style="list-style-type: none"> <li><span style="display: inline-block; width: 15px; height: 10px; background-color: #FFC0CB; border: 1px solid black;"></span> Habitat linéaire (3)</li> <li><span style="display: inline-block; width: 15px; height: 10px; background-color: #808080; border: 1px solid black;"></span> Habitat d'origine minière (4)</li> <li><span style="display: inline-block; width: 15px; height: 10px; background-color: #FFA07A; border: 1px solid black; border-style: dashed;"></span> Habitat en lotissement (5)</li> <li><span style="display: inline-block; width: 15px; height: 10px; background-color: #FF0000; border: 1px solid black; border-style: dotted;"></span> Habitat pavillonnaire non loti (6)</li> <li><span style="display: inline-block; width: 15px; height: 10px; background-color: #FF69B4; border: 1px solid black;"></span> Habitat rural (7)</li> <li><span style="display: inline-block; width: 15px; height: 10px; background-color: #A0522D; border: 1px solid black;"></span> Habitat collectif haut (8)</li> </ul>  | Espaces agricoles           | <ul style="list-style-type: none"> <li><span style="display: inline-block; width: 15px; height: 10px; background-color: #FFFF00; border: 1px solid black;"></span> Cultures annuelles (33)</li> <li><span style="display: inline-block; width: 15px; height: 10px; background-color: #90EE90; border: 1px solid black;"></span> Bandes enherbées (34)</li> <li><span style="display: inline-block; width: 15px; height: 10px; background-color: #8B4513; border: 1px solid black;"></span> Maraîchage et serres (35)</li> <li><span style="display: inline-block; width: 15px; height: 10px; background-color: #90EE90; border: 1px solid black; border-style: dashed;"></span> Pépinières, horticulture (36)</li> <li><span style="display: inline-block; width: 15px; height: 10px; background-color: #008000; border: 1px solid black; border-style: dotted;"></span> Vergers intensifs (37)</li> <li><span style="display: inline-block; width: 15px; height: 10px; background-color: #32CD32; border: 1px solid black;"></span> Vergers traditionnels (38)</li> <li><span style="display: inline-block; width: 15px; height: 10px; background-color: #90EE90; border: 1px solid black;"></span> Prairies permanentes (39)</li> <li><span style="display: inline-block; width: 15px; height: 10px; background-color: #90EE90; border: 1px solid black; border-style: dotted;"></span> Prairies temporaires (40)</li> <li><span style="display: inline-block; width: 15px; height: 10px; background-color: #8B4513; border: 1px solid black;"></span> Espaces agricoles en friche (41)</li> </ul> |                |   |
| Equipements et emprises publiques   | <ul style="list-style-type: none"> <li><span style="display: inline-block; width: 15px; height: 10px; background-color: #FFD700; border: 1px solid black;"></span> Cimetières (9)</li> <li><span style="display: inline-block; width: 15px; height: 10px; background-color: #FF0000; border: 1px solid black; border-style: dashed;"></span> Emprises hospitalières (10)</li> <li><span style="display: inline-block; width: 15px; height: 10px; background-color: #FF0000; border: 1px solid black; border-style: dotted;"></span> Emprises scolaires / universitaires (11)</li> <li><span style="display: inline-block; width: 15px; height: 10px; background-color: #FF0000; border: 1px solid black; border-style: solid;"></span> Autres emprises publiques (12)</li> </ul>  | Forêts et milieux naturels  | <ul style="list-style-type: none"> <li><span style="display: inline-block; width: 15px; height: 10px; background-color: #8B4513; border: 1px solid black;"></span> Terrils boisés (42)</li> <li><span style="display: inline-block; width: 15px; height: 10px; background-color: #006400; border: 1px solid black;"></span> Forêts de feuillus (43)</li> <li><span style="display: inline-block; width: 15px; height: 10px; background-color: #008000; border: 1px solid black;"></span> Forêts de conifères (44)</li> <li><span style="display: inline-block; width: 15px; height: 10px; background-color: #3CB371; border: 1px solid black;"></span> Forêts mixtes (45)</li> <li><span style="display: inline-block; width: 15px; height: 10px; background-color: #3CB371; border: 1px solid black; border-style: dotted;"></span> Peupleraies (46)</li> <li><span style="display: inline-block; width: 15px; height: 10px; background-color: #3CB371; border: 1px solid black; border-style: dashed;"></span> Peupleraies récentes (47)</li> <li><span style="display: inline-block; width: 15px; height: 10px; background-color: #3CB371; border: 1px solid black;"></span> Autres reboisements récents (48)</li> <li><span style="display: inline-block; width: 15px; height: 10px; background-color: #3CB371; border: 1px solid black; border-style: dotted;"></span> Coupes forestières (49)</li> </ul>   |                |   |
| Equipements sportifs / de loisir    | <ul style="list-style-type: none"> <li><span style="display: inline-block; width: 15px; height: 10px; background-color: #FFD700; border: 1px solid black; border-style: dashed;"></span> Equipements sportifs (13)</li> <li><span style="display: inline-block; width: 15px; height: 10px; background-color: #FFD700; border: 1px solid black; border-style: dotted;"></span> Camping, caravanning (14)</li> </ul>  | Espaces verts urbains       | <ul style="list-style-type: none"> <li><span style="display: inline-block; width: 15px; height: 10px; background-color: #90EE90; border: 1px solid black; border-style: dotted;"></span> Espaces verts urbains et périurbains (15)</li> <li><span style="display: inline-block; width: 15px; height: 10px; background-color: #8B4513; border: 1px solid black; border-style: dotted;"></span> Jardins ouvriers (16)</li> </ul>   | Espaces en eau | <ul style="list-style-type: none"> <li><span style="display: inline-block; width: 15px; height: 10px; background-color: #0000FF; border: 1px solid black;"></span> Cours d'eau et voies d'eau (50)</li> <li><span style="display: inline-block; width: 15px; height: 10px; background-color: #ADD8E6; border: 1px solid black;"></span> Plans d'eau (51)</li> <li><span style="display: inline-block; width: 15px; height: 10px; background-color: #ADD8E6; border: 1px solid black; border-style: dashed;"></span> Espaces associés aux plans d'eau (52)</li> <li><span style="display: inline-block; width: 15px; height: 10px; background-color: #8B4513; border: 1px solid black; border-style: dotted;"></span> Marais (53)</li> </ul> |
| Réseaux et équipements de transport | <ul style="list-style-type: none"> <li><span style="display: inline-block; width: 15px; height: 10px; background-color: #000000; border: 1px solid black; border-style: dashed;"></span> Aéroports, aérodromes (17)</li> <li><span style="display: inline-block; width: 15px; height: 10px; background-color: #000000; border: 1px solid black; border-style: dotted;"></span> Infrastructures portuaires et fluviales (18)</li> <li><span style="display: inline-block; width: 15px; height: 10px; background-color: #FF0000; border: 1px solid black; border-style: dashed;"></span> Axes routiers principaux et espaces associés (19)</li> <li><span style="display: inline-block; width: 15px; height: 10px; background-color: #FF0000; border: 1px solid black; border-style: dotted;"></span> Axes ferroviaires principaux et espaces associés (20)</li> </ul>  | Emprises d'activités        |  |                |   |
|                                     | <ul style="list-style-type: none"> <li><span style="display: inline-block; width: 15px; height: 10px; background-color: #FF0000; border: 1px solid black; border-style: dashed;"></span> Emprises industrielles (21)</li> <li><span style="display: inline-block; width: 15px; height: 10px; background-color: #FFA500; border: 1px solid black; border-style: dotted;"></span> Emprises artisanales et d'activités (22)</li> <li><span style="display: inline-block; width: 15px; height: 10px; background-color: #0000FF; border: 1px solid black; border-style: dotted;"></span> Emprises commerciales (23)</li> <li><span style="display: inline-block; width: 15px; height: 10px; background-color: #8B4513; border: 1px solid black; border-style: dotted;"></span> Emprises des bâtiments d'activité agricole (24)</li> <li><span style="display: inline-block; width: 15px; height: 10px; background-color: #800080; border: 1px solid black;"></span> Décharges (25)</li> <li><span style="display: inline-block; width: 15px; height: 10px; background-color: #8B4513; border: 1px solid black;"></span> Carrières (26)</li> <li><span style="display: inline-block; width: 15px; height: 10px; background-color: #008000; border: 1px solid black;"></span> Chantier (27)</li> <li><span style="display: inline-block; width: 15px; height: 10px; background-color: #8B4513; border: 1px solid black;"></span> Terrils en exploitation (28)</li> </ul> |                             |  |                |   |



0 250 500 m